

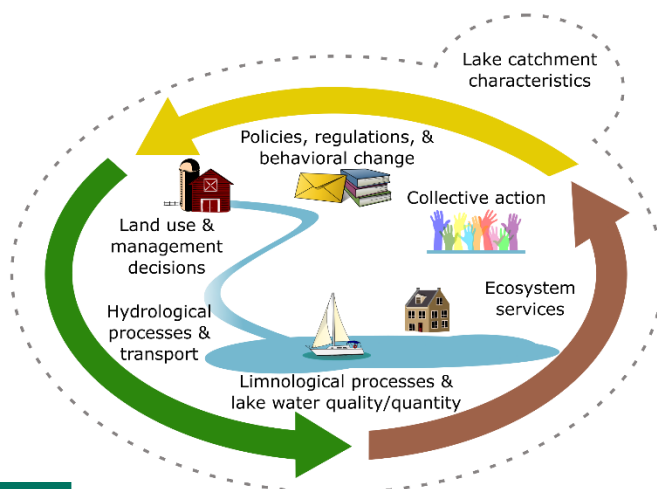


## Year 3 Workshop Agenda

### Capturing & Analyzing Human-Natural Feedbacks in Lake Catchments

16-18 May 2018

Sunapee, NH



Tuesday, May 15, 2018		
5:00 pm	Check-in at Dexter’s Inn	Dexter’s Inn
6:00 – 8:00 pm	Dinner at Dexter’s Inn	
Wednesday, May 16, 2018		
7:00 – 8:00 am	Breakfast at Dexter’s Inn	Dexter’s Inn
8:00 – 8:30 am	<b>Welcome</b> <i>Kathleen Weathers, Welcome &amp; introduction to LSPA</i> <i>Kelly Cobourn, Project update &amp; workshop goals</i>	LSPA office
8:30 – 10:00 am	<b>Team updates: Building coupling linkages</b> <i>Armen Kemanian, Cycles/Biome BGC</i> <i>Kelly Cobourn, Economic SDP</i> <i>Chris Duffy, PIHM</i>	
10:00 – 10:30 am	Coffee Break	
10:30 – 12:15 pm	<b>Team updates: Building coupling linkages</b> <i>Cayelan Carey &amp; Paul Hanson, GLM</i> <i>Weizhe Weng, Hedonic modeling</i> <i>Mike Sorice, Civic engagement</i> <i>Joe Stachelek, Scaling up and extrapolation</i>	
12:15 – 1:30 pm	Catered Lunch & Posters	
1:30 – 3:00 pm	<b>Group brainstorming and discussion:</b> What is our “big paper” and what are supporting objectives to get us there? (Facilitated by Reilly Henson)	
3:00 – 3:30 pm	Coffee & Snack Break	
3:30 – 4:00 pm	<b>Concurrent working groups:</b> Advancing the “big paper” (Facilitated by Reilly Henson)	
4:00 – 7:00 pm	Poster Reception and Boat Tour of Lake Sunapee	
7:00 – 8:30 pm	Dinner (Catered by The Coach House)	

Thursday, May 17, 2018		
7:00 – 8:00 am	Breakfast at Dexter's Inn	Dexter's Inn
8:00 – 9:00 am	<b>Group Discussion</b> Lake Association engagement & preparation for presentation of model visualizations	LSPA office
9:00 – 10:00 am	<b>Engaging Citizens and Lake Associations with CNHS Research</b> (Facilitated by Kathleen Weathers) <i>Welcome by Kristen Begor, LSPA</i> Visualization of model output and other tools to bring CNHS research to citizen groups	
10:00 – 10:30 am	Coffee break	
10:30 – 12:00 pm	<b>Engaging Citizens and Lake Associations with CNHS Research – Continued</b>	
12:00 – 1:00 pm	Catered Lunch	
1pm – 2:00 pm	<b>Group brainstorming and discussion:</b> Deriving Essential Management Variables from coupling linkages (Facilitated by Chris Duffy)	
2:00 – 2:30 pm	Coffee & Snack Break	
2:30 – 4:00 pm	<b>Concurrent working groups:</b> Steps toward deriving EMVs (Facilitated by Chris Duffy)	
4:00 – 5:00 pm	<b>Team discussion</b> Reporting out from working groups; Summary & goals (Facilitated by Kelly Cobourn)	
5:00 – 6:30 pm	Break, Dexter's Inn, and to travel to New London	In Transit
6:30 – 7:45 pm	Reception & Dinner	Colby-Sawyer College
7:45 – 10:00 pm	Convene chez Weathers	
Friday, May 18, 2018		
7:00 – 8:00 am	Breakfast at Dexter's Inn	Dexter's Inn
8:00 – 10:00 am	<b>Team discussion</b> Plans for papers; Strategy for moving forward in Year 3/NCE; Sustainability and future opportunities for the team (Facilitated by Kelly Cobourn)	LSPA office
10:00 – 10:30 am	Coffee Break	
10:30 – 12:00 pm	<b>Team discussion</b> Wrap-up & logistics (Facilitated by Reilly Henson)	
12:00 – 1:00 pm	Catered Lunch	
1:00 pm	Adjourn	